

CM-Ethernet Quick Guide

CM-Ethernet is a plug-in card with Ethernet 10/100 Mbit interface in RJ45 connector. It provides an interface for connecting a PC with through ethernet/internet network, for sending active e-mails and for integration of the controller into a building management (MODBUS TCP and SNMP protocols). This card also enables to monitor and control the gen-set over web browser from any location with internet access using appropriate security measures.

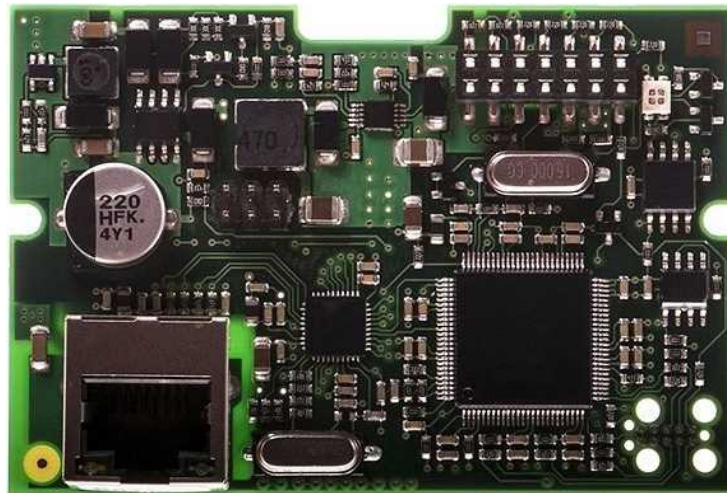


Image 1.1 CM-Ethernet interface

IMPORTANT: Any manipulation with plug-in module shall be done with disconnected power supply to controller.

Use an Ethernet UTP cable with a RJ45 connector for linking the module with your Ethernet network. The module can also be connected directly to a PC using cross-wired UTP cable.

IMPORTANT: Module functionality depends on used controller. Before usage of module please check controller manual to see which functions are supported.

Module setup

All settings related to the module are to be adjusted via the controller setpoints. The respective setpoints are located in the setpoint Group: CM-Ethernet.

All actual operational values like actual IP address etc. are available in controller values in a specific group as well.

Firmware upgrade

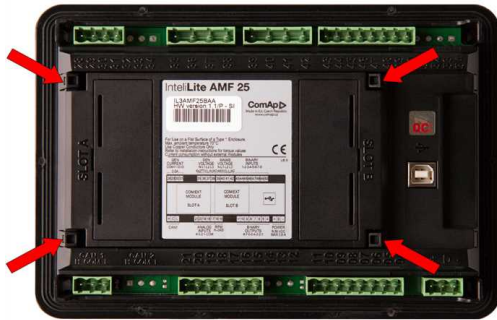
- ▶ Download the newest FW of module from ComAp website (in form of PSI file or installation package)
- ▶ Instal package to computer or open PSI to instal it into IntelliConfig
- ▶ Plug the module into the controller and power the controller on.
- ▶ Open a connection with controller via IntelliConfig

- ▶ Go the menu Tools -> Firmware upgrade, select the Plug-in modules tab and select the appropriate firmware you want to program into the module (in IntelliConfig).
- ▶ Press the OK button to start upgrade of firmware.

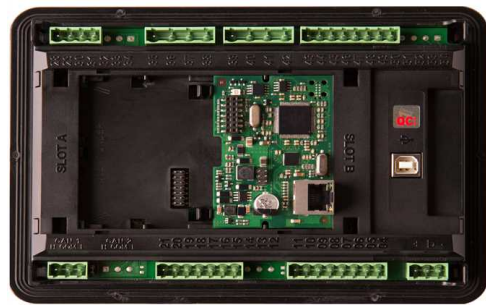
The firmware update process may be performed via any kind of connection including connection via the same module in which the firmware is to be updated. The connection is reestablished again automatically when the update process is finished.

Plug-in module installation

Remove the back cover. To do this, press four holders which are located in corners.

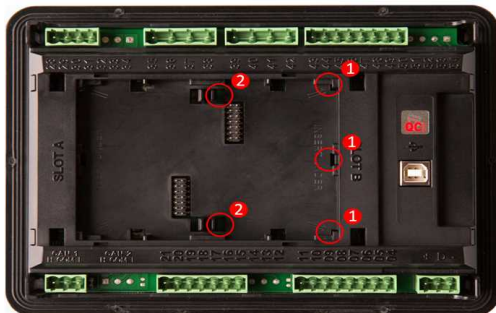


Insert the plug-in module under holders marked by symbol 1. Then insert the plug-in module under holders marked by symbol 2.



After removing back cover insert the plug-in module. Plug-in module has to be inserted under holders. Start with holders market by symbol 1. On the controller are also narrows for better navigation. After inserting plug-in module under holders 1 press it down to holders market by symbol 2 which lock the module.

After locking the plug-in module into holders, place back the back cover (small cover for connectors has to be removed from back cover). Finally insert the small cover for connectors. Small covers are unique for each plug-in module.





Greenpower AB
 Helsingborgsvägen Varalöv
 262 96 Ängelholm
 Tel: 0431-222 40
 E-mail: info@greenpower.se
 web:www.greenpower.se